

RWANDA DESTINATION



VOLCANOES NATIONAL PARK

The Volcanoes National Park is located in the far northwest of Rwanda. It borders Virunga Park in the Democratic Republic of Congo and Mgahinga Gorilla National Park in Uganda. It is home to the **mountain gorilla** and the **golden monkey** where the primatologist Diana Fossey studied and protected the endangered mountain gorilla in Rwanda for many years.

The **Volcanoes National Park** is named after the chain of dormant volcanoes making up the Virunga Massif, it encompasses five of the eight volcanoes in the **Virunga Mountains**: **Karisimbi** – the highest at 4 507m, **Muhabura** at 4 127 m, **Bisoke** with its verdant Crater Lake at 3 711 m, **Sabinyo** at 3 645 m and **Gahinga** at 3 474 m.

The three other volcanoes situated in DR Congo are: **Mikeno** extinct volcano at 4 437 m, Nyiragongo is an active stratovolcano with an elevation of 3,470 m, **Nyamuragira**, an active shield volcano with 3 068 m.



Tropical rainforest, rich mosaics of mountain ecosystems, which include coniferous and bamboo forest, open meadows, marshes and heather, the Volcanoes National Park is home to a very rich biodiversity that irresistibly attracts you as a tourist, researcher or botanist, to go on a safari in the volcanoes in northern Rwanda.

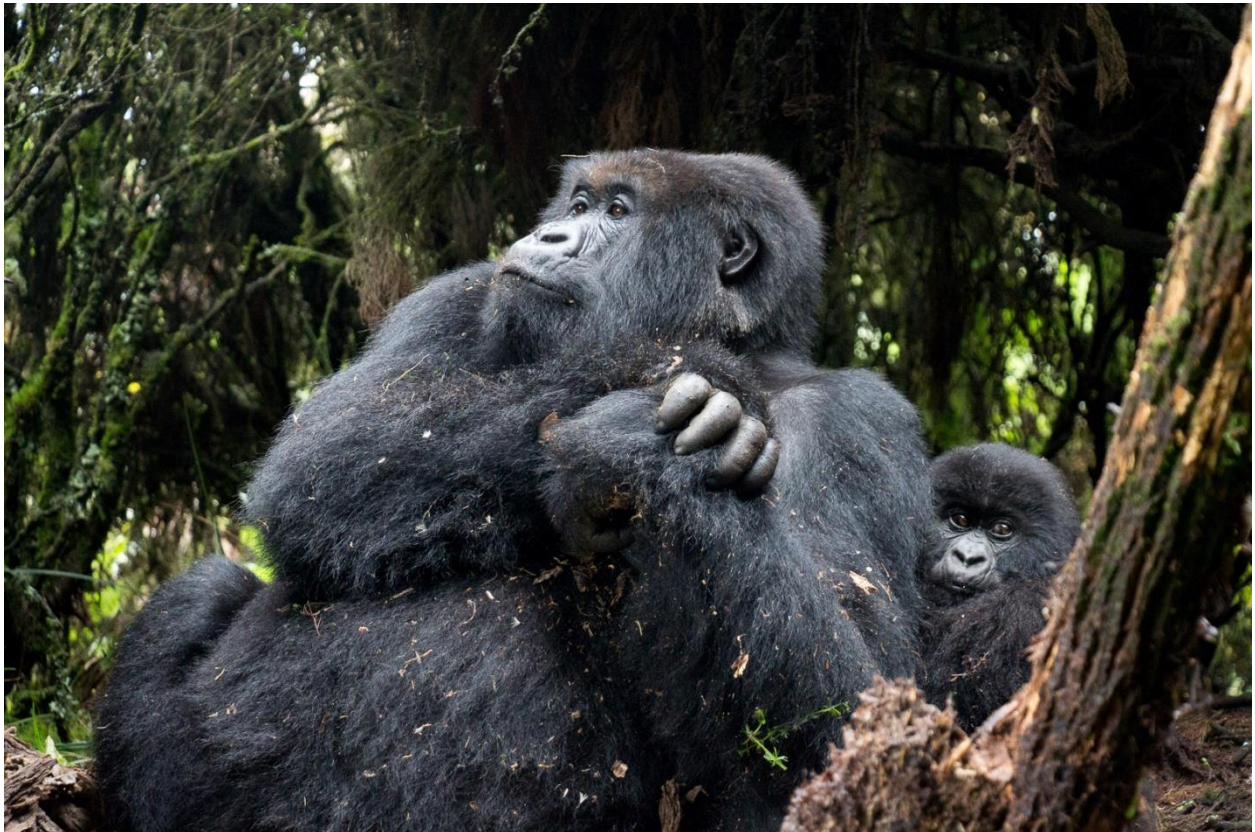
Tourism activities to enjoy in the Volcanoes National Park:

- ✓ Mountain gorillas trekking,
- ✓ Golden monkey trek,
- ✓ Dian Fossey tomb and Research Centre hike,
- ✓ Natural walk and volcanoes sightseeing,
- ✓ Bisoke volcano hike,

- ✓ Kalisimbi volcano hike,
- ✓ Muhabura volcano hike,
- ✓ Gahinga volcano hike,
- ✓ Muhabura-Gahinga (Rwanda dawns on you at Gahinga-Muhabura trail),
- ✓ Caving adventure in Musanze,
- ✓ Buhanga Eco-Park trek,
- ✓ Burera and Ruhondo twin lakes sightseeing, ✓ Village walks to the communities, etc.

BOOK NOW

Visit the mountain gorillas, Rwanda's top tourist attraction



These gentle giants are found in the **Virunga Mountains** and can be visited only in Rwanda, Uganda and Democratic Republic of Congo. Rwanda has 20 gorilla families located in Volcanoes National Park out of which 10 families are for research, and 10 are for gorilla

trekking. This, therefore, means **80 gorilla permits are available daily** to be bought by interested visitors and tourists to come and visit mountain gorillas in Rwanda. These include Sabyinyo, Susa, Karisimbi, Umubano, Amahoro, Kwitonda, Hirwa, Bwenge, Agashya and Ugyenda. And only 8 permits are allocated per family. **The gorilla visit permit fee is \$1500 / 1 day / 1 pax.** The booking is normally done in advance and earlier as they are on high demand.

ATTRACTIVE SAFARIS organizes tours to the National Volcanoes Park to see the rare mountain Gorillas only found in Virunga region include the north of Rwanda, Uganda and D.R.Congo. Our professional driver guides will drive you there and then the professional park rangers in duties who can lead you in the jungle to see them at close range in their natural habitat.

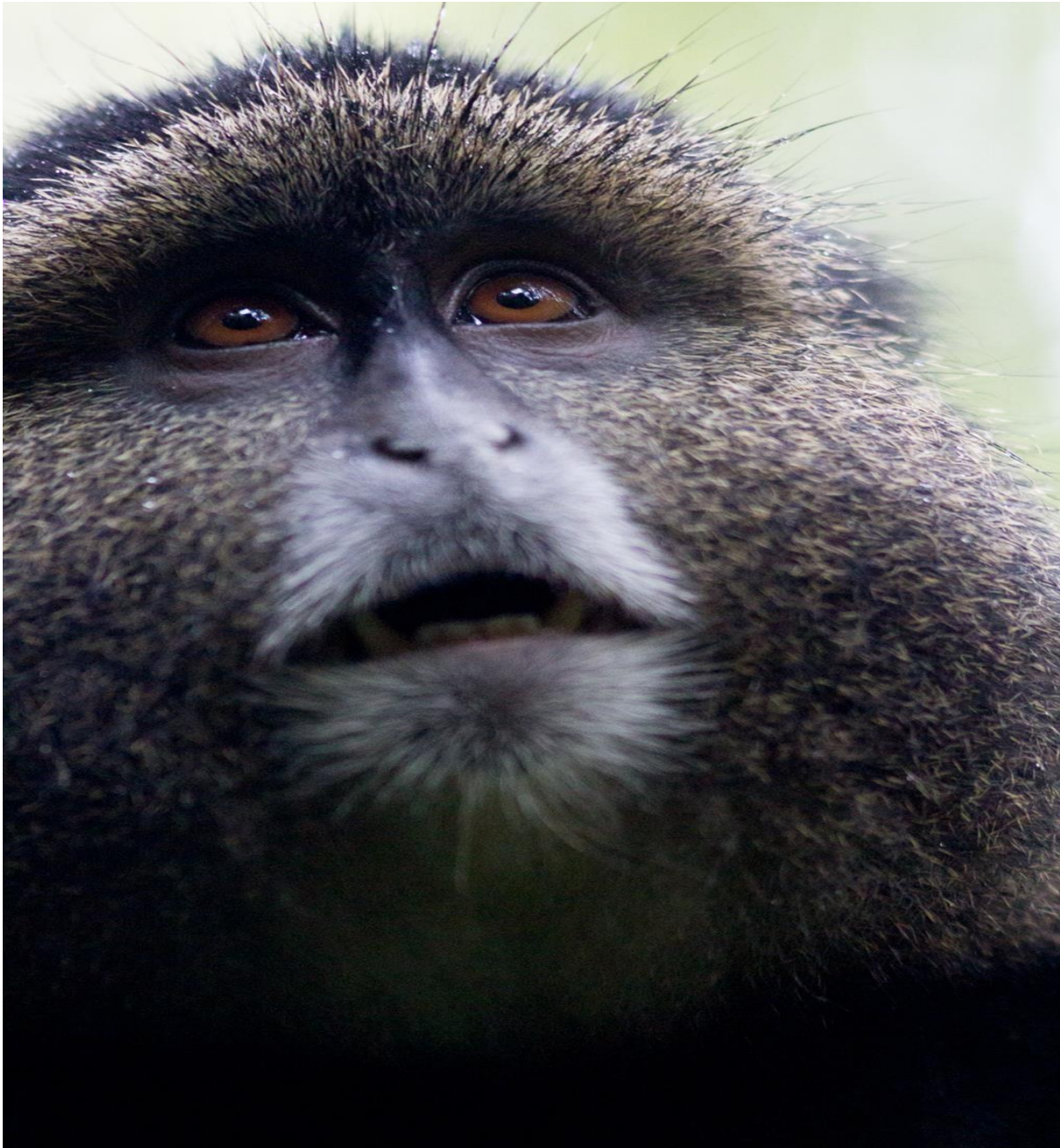
Don't miss your unique experience of life!

Visit Mountain Gorilla Guidelines

- Maximum of 8 visitors per gorilla family are authorized to visit.
- To minimize possible transmission of human diseases, visitors are asked to maintain at least a distance of 5m from the gorillas. If you are sick with a cold, flu or other contagious illness, please do not visit the gorillas. ➤ Viewing time is limited to one hour.
- Photography is permitted, although you may not use flash ➤ Spitting in the park is strictly prohibited.
- Should you need to cough? Cover your mouth and turn away from the gorillas.
- When with the gorillas, keep your voice low.
- Try not to make rapid movements that may frighten the gorillas.
- If a gorilla should charge or vocalize at you, do not be alarmed, stand still, look away from the gorilla and follow your guide's directions.
- Do not litter.
- For the mountain gorilla trek you must take the following items with you:
- The climate in volcanoes is changeable and you can generally expect both sun and rainfall during the day.
- Musanze/Kinigi, at 1,700m above sea level, is generally quite cold, particularly in the evening, so warm clothing is advised.
- Recommended long trousers and shirts when in the forest to avoid nettle stings.
- Study walking shoes or hiking boots are essential, suitable for muddy ground. Bring a pair of gaiters to protect the bottom of the pants and the shoes in the rainy season.
- Rainy tropical forest, you may find and a hat raingear useful.
- Long-sleeved clothing, long pants and gloves to avoid nettle stings.
- Bring enough drinking water to drink and even concentrates or cookies to eat although eating, drinking and smoking near the gorillas is forbidden.

- Porters are available to help you carry your daypack for a small charge.
- Mountain gorillas live at high altitude and this may cause difficulties for some visitors. You should pace yourself, walk slowly and drink plenty of water. No one should feel deterred from making this trip.

Book Now



If you can't afford or miss mountain gorillas tracking, for any reason, you can go on the following optional tourism activities:

- ✓ Trek to a habituated group of Golden Monkeys (*cercopithecus mitis kandti*) which are endemic to the Virungas.
- ✓ Visit the Karisoke Research centre built by Dian Fossey and the site of her grave, located in the Park between the Karisimbi and Bisoke Volcanoes.
- ✓ Volcanoes climbing : Bisoke volcano hike with its superb crater lake, Kalisimbi volcano hike (2 days), Muhabura volcano hike, Gahinga volcano hike,
Muhabura-Gahinga (Rwanda dawns on you at Gahinga-Muhabura trail),
- ✓ Musanze caves adventure
- ✓ Tour to the shores of Twin Lakes (Burera-Ruhondo) formed after volcanic explosion.
- ✓ Hike to Buhanga Eco Park, this is a cultural& historical famous park for the past Rwanda monarchy reign.
- ✓ Volcanoes sightseeing: discovering the ecosystem of four types of vegetation including low altitude bamboos.
- ✓ Village walk to the communities: meet people in their daily life, customs, history and culture.

Book Now

AKAGERA NATIONAL PARK



Akagera National Park is located in the Northeast of Rwanda along the border with Tanzania. It is covering an area of 1122 km²;

It is named after the Akagera River that flows along its eastern boundary and feeds into a labyrinth of lakes of which the largest is Lake Ihema. The rolling hills of Acacia and Brachystegia Woodland coupled with scattered grassland and swamp-fringed lakes along the meandering Akagera watercourse combine to create a park of breathtaking scenic beauty.

This Park is Rwanda's famous Savanna reserve. In comparison to the rest of the country, the area is relatively warm and low-lying, and plains support a cover of dense, broadleafed woodland with lighter acacia woodland and patches of rolling grassland studded eloquently with stands of the superficially cactus-like *Euphorbia candelabra* shrub. Akagera is also among the most scenic of savanna reserves, with its sumptuous forestfringed lakes, tall mountains and constantly changing vegetation.



Akagera offers big game viewing, with herds of elephants and buffaloes emerging from the woodland to drink at the lakes, and then other mammals include leopards, spotted hyenas and lions. Giraffes and zebras haunt the savannah, and more than a dozen types of antelope inhabit the park, most commonly the chestnut-coated impala, but also the oribi and bushbuck, as well as the ungainly tsessebe and the world's largest antelope, the statuesque Cape eland.

In partnership with African Parks, lions and rhinos have been reintroduced, meaning once again visitors can hope to see the Big Five on safari drives.

The lakes of Akagera are inhabited by hippos and crocodiles, a part from some of the continent's densest concentrations of water birds.

Sleeping within the park is possible, at various lodges, a bush camp in the north at select periods, or camping in specific sites.



The Park offers well developed wild game drives, boat trip game viewing on the lakes and along the Akagera River.

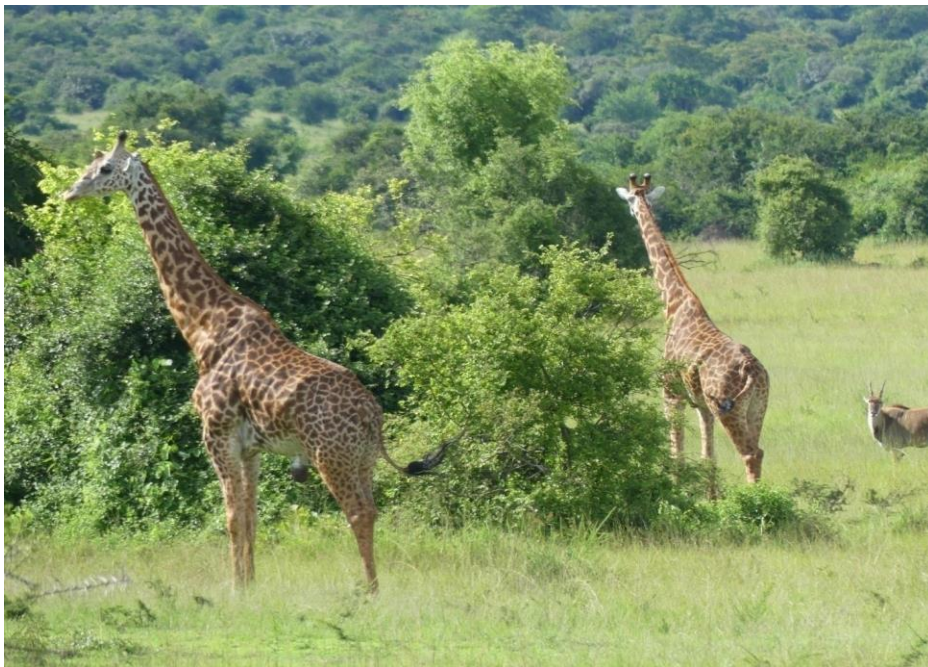
Tourism activities to enjoy in Akagera National Park:

- ✓ Day safari game drive
- ✓ Night safari game drive
- ✓ Boat trip game viewing on the lake Ihema
- ✓ Behind the scenes tour
- ✓ Fishing
- ✓ Community Cultural Experiences
- ✓ Walk the Line
- ✓ Camping



ATTRACTIVE SAFARIS

organizes safaris of **one-day, two-day, three or more day safari** in Akagera National Park, Our professional driver guides will take you there. At the end of your safari you will surely return very satisfied with the rich and remarkable experience in fauna and flora that this savannah park offers to its visitors.

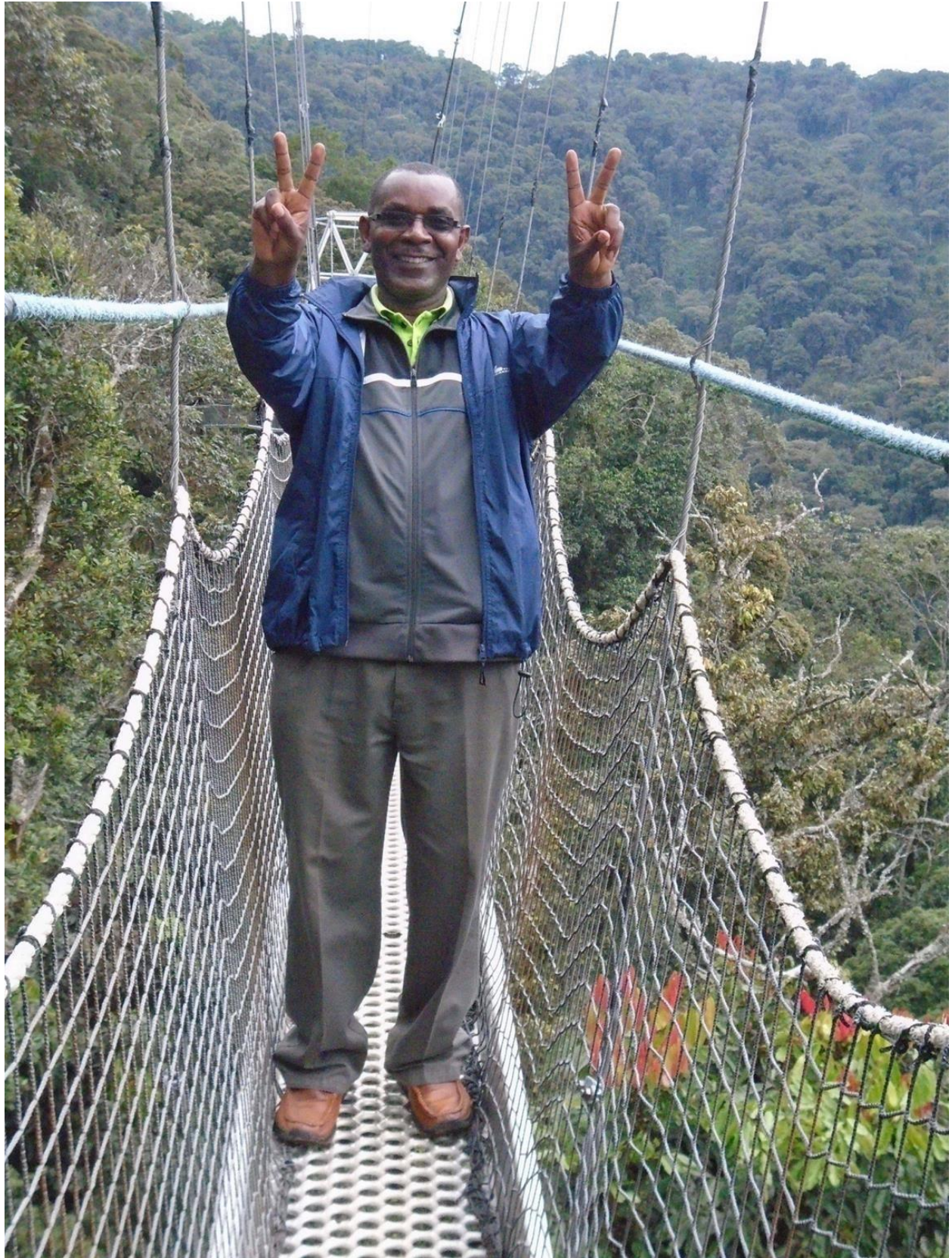


Nyungwe National Park



Lying on a surface area of 1000 km² of imposing hills in the south-west of Rwanda, Nyungwe National Park is the largest reserve of primary highland forests in East Africa. One of Africa's oldest rainforests, Nyungwe is rich in biodiversity and spectacularly beautiful.

Being unique as a result of the diversity of its flora, botanists will marvel at the 1,068 plant species including the giant lobelia and 140 orchids. The **birdwatching** is among the best in Africa with 322 birds' species including Red-collared Babbler and 29 other Albertine Rift Endemic species. The most beautiful bird in Nyungwe is the big blue turaco - a bird that has a strange blue color, with red and green feathers, which flutters from tree to tree in psychedelic processions. Butterflies are also a common sight, with at least 120 species.



But Nyungwe is especially renowned for its primates: 13 species on the whole, including the closest ancestors of the human being, chimpanzees, and the handsome Black and White Angolan colobus monkeys, which are agile and acrobatics. There are 75 known mammals in Nyungwe, such as the cerval cat, gazelle, mongoose, congo clawless otter and few leopards.



Memorable and photogenic moments include walking up to the Isumo waterfall or along the **Canopy Walk** suspension bridge. **Tea plantations** border the edges of the park, with a habituated troop of Ruwenzori colobus monkeys at Gisakura as well as forest fringe birds.

With plenty of rainfall, Nyungwe is also the major catchment area in Rwanda, and supplies water to 70% of the country. A ridge running through the forest forms a watershed between the drainage systems of the Nile and the Congo. A spring on the slopes of Mt Bigugu is said to be the most remote source of the Nile, the world's longest river. An important network of well-maintained footpaths takes you through the forest to waterfalls and scenic views. Anyone who wants to calmly experience the beauty and wealth of Nyungwe will need at least three days - and bird watchers may never want to leave.



Tourism activities to enjoy in Nyungwe National Park:

- ✓ Chimpanzee trekking with guides,
- ✓ Other primates with guides,
- ✓ Guided birding walk,
- ✓ Canopy adventure guided walk,
- ✓ Congo Nile guided hike,
- ✓ Guided nature trails walk,
- ✓ Tropical waterfall guide hike,
- ✓ Source of Nile guided hike, ✓ Tee tour experience, etc.

ATTRACTIVE SAFARIS organizes tours to Nyungwe National Park. Our professional driver guides will drive you there and then the professional park rangers in duties will guide you in the forest to enjoy its captivating and breathtaking beauty.

Lake Kivu, a relaxing paradise in Rwanda



Lake Kivu is located in the West of Rwanda on the border between the Democratic Republic of Congo and Rwanda. Part of Africa's Great Rift Valley, Lake Kivu is one of the Great Lakes of Africa. It is Rwanda's largest lake and the sixth largest in Africa. The lake covers a total surface area of some 2700 km² and stands at a height of 1463 m above sea level. Its maximum depth of 480 m is ranked eighteenth in the world. The lake is surrounded by majestic mountains.

Lake Kivu is a relaxing paradise for swimming, lazing on red sandy beaches, watersports & adventure.



Lake Kivu is the largest of many freshwater lakes found in Rwanda that shines in the valleys and terraced hills that lead down to the picturesque lake shores and three resort towns: Rubavu (Gisenyi), Karongi (Kibuye) and Rusizi (Cyangugu), that are ideal stopping points to relax, swim, or taking a boat excursion past the small lakeside villages that offer a rewarding glimpse of rural life.

Touring along the Lake Kivu, in addition to enjoying sublime landscapes, you can observe the peasants cultivating the fields of tea, cassava, coffee, and daily life in the Rwandan countryside. You will also take advantage of the Congo-Nile crest with a good view of Lake Kivu and its surroundings.

Rubavu: offers you waterfront town on the shores of Lake Kivu, with red sandy beaches, warm clean water and an easygoing tropical character.



Karongi: relax and exploration of Lake Kivu clear water, discovery by boat of the beauty of the small bay and the neighboring islands: Amahoro Island, Napoleon Island, Monkey Island....

Rusizi: don't miss an authentic experience of Rwandan daily life, head off night fishing with the locals, or *kayak* out with them at sunset.

A tour to Lake Kivu gives you the opportunities to learn a lot about the most of points of interests located in the west of a land of thousands hills including.

Tourism activities to enjoy along Lake Kivu:

- ✓ Sport & Adventure: kayaking and swimming...
- ✓ Relax on red sandy beaches in Gisenyi
- ✓ Boat ride on Lake Kivu in Gisenyi or in Kibuye
- ✓ Visit Amahoro Island, Napoleon Island, Monkey Island in Kibuye
- ✓ Isambaza night fishing experience tour in Rusizi
- ✓ Hot springs in Nyambyumba – Gisenyi



Attractive Safaris organizes safaris along Lake Kivu. Our professional driver guides will take you there and guide you to enjoying its picturesque lake shores and sublime landscapes.

The Congo Nile Trail, the crest of adventure!



Biking, hiking or safari along the Congo Nile Trail is one of the exciting ways to explore Rwanda. This 227 km long trail goes from Rubavu (Gisenyi) to Rusizi (Cyangugu) along the picturesque shores of Lake Kivu. The three towns are connected by the curvy Kivu Belt road, winding its way through breathtaking landscape, passing green banana fields and tea plantations, charming little rural villages and the endless wideness of Lake Kivu.

Rwanda is also known as "Land of a Thousand Hills". The image is not wrong. The topology of Rwanda, in particular the Congo-Nile crest, is made up of infinity of hills which follow one another and succeed one another. Thus the path or track of the Congo-Nile Trail passes either at the top or at the foot of each of them.



Breathe the pure mountain air, enjoy a panoramic view of the hills bordering Lake Kivu, travel through hilly landscapes and visit the highest peak of the watershed ridge between the Nile and the Congo at 2300m, overlooking the Lake Kivu on which, on a clear day, the view extends over the volcanoes of northwestern Rwanda. This is how we could sum up this circuit, which stretches from Rubavu to Rusizi, alternating between discoveries, meetings with the local population, and activities in the heart of nature.



Whatever your way of traveling, the Congo Nile Trail offers you many community tourist experiences to visit such as meeting the population in their daily activities, or in their associations and cooperatives, a live cultural dance, craft making, beekeeping, a coffee or tea tour experience, traditional healers who use natural plants to support modern medicine and synthesized medicines, etc.



Tourism activities to enjoy along Congo Nile Trail:

- ✓ Hiking on the Congo Nile Trail
- ✓ Cycling on the Congo Nile Trail
- ✓ Driving safari on the Congo Nile Trail
- ✓ Coffee tour experience
- ✓ Tea tour experience
- ✓ Community based tourism experiences visit
- ✓ Meet people in their daily activities

Attractive Safaris organizes tours along Congo Nile Trail. The main role of our guides is to direct you to the best trails and shortcuts and to provide you with assistance that adapts to you at any time of need. Our local guides will help you to be in contact with population while in community based tourism experiences.

Welcome to KIBEHO-RWANDA Pilgrimage



”Mother of the World pray for us”

In the heart of the Africa, **Kibeho** is a small town situated in south Rwanda. It became known outside of the country because of reported apparitions of the Blessed Virgin Mary and Jesus Christ occurring between 1981 to 1989.



The apparitions of Kibeho are part of the network that the Virgin Mary is weaving in order to launch a last offensive against the Malignant forces and to lock him, and then to prepare the way of her divine Son Jesus Christ final victory (*Cardinal Ivan DIAS, Kibeho, 28.11.2007*). They are the only Vatican-approved Marian apparitions in the continent of Africa.



During peak season, Kibeho Church receives between 25,000-30,000 visitors. Religious tourists and pilgrims flock from across the world, including America, Poland, The Czech Republic, Slovakia, France, Italy and India.

During low season, Kibeho receives approximately 100 religious tourists a week, mostly from Rwanda, Uganda, the Democratic Republic of Congo and Tanzania.

PILGRIMAGE PROGRAM

Attractive Safaris organizes pilgrimages to Kibeho around the Marian solemnities and feasts in Kibeho:

- ✓ May 31: Dedication of the Shrine of Our Lady of Sorrows in Kibeho
- ✓ August 15: Assumption of Mary
- ✓ November 28: Our Lady of Kibeho (Anniversary of the apparitions of Alphonsine Mumureke, the beginning of the apparitions)

And other days and Marian feasts in Kibeho at the request of the pilgrims at their convenience, in particular:

- ✓ January 12: Anniversary of the apparitions of Nathalie Mukamazimpaka
- ✓ March 2: Anniversary of the apparitions of Marie Claire Mukangango
- ✓ September 15: Our Lady of Sorrows
- ✓ October 7: Our Lady of the Rosary

The first Catholic Church built at SAVE Rwanda in 1900



Attractive Safaris organizes also pilgrimage to other holy Christian places within Rwanda. This pilgrimage can be a happy opportunity to get connected to the Christianity

development in Rwanda where the first Catholic mission was early implanted in 1900 at Save to the south of Rwanda.



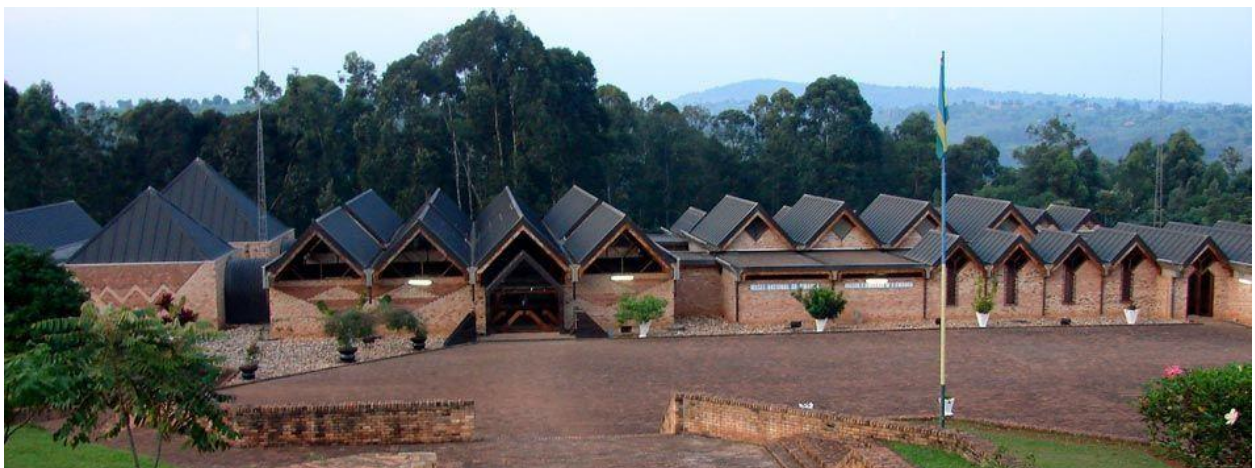
To deeply discover Rwanda, throughout the pilgrimage, we suggest that the pilgrims also go to meet the Rwandan people in their daily and community activities and to discover the various tourist attractions of the country.

RWANDA CULTURAL AND HISTORICAL HERITAGE



Kigali Genocide Memorial Site

Cities tour, Genocide memorial sites, Rwanda National Museum, Nyanza royal palace, folks dancing, market (which displays a variety of local art and crafts depicting the local and cultural heritage Rwanda, etc. will allow you enough to be in contact with Rwanda history and culture.



The Huye National Museum is reputed to be the best ethnographical Museum in East

Africa.



Nyanza was the Palace of the former Kingdom of Rwanda before the arrival of Europeans.

THE CITY OF KIGALI



Kigali, the Capital city of Rwanda, is for many tourists visiting the country, the arriving gateway and departure. One of the cleanest cities in the world, Kigali is green and safe with meaningful culture. In fact, it's so clean it holds the official title of "The Cleanest City in Africa."



Kigali is developing rapidly, with new shopping malls, office buildings and a world-class convention centre built in the style of the King's Palace of olden days, which lights up the night sky atop of one of the many hills.



Kigali City tour highlights:

- ✓ Visit of the Kigali genocide memorial
- ✓ Visit of the districts of the city of Kigali
- ✓ Kandt House Museum
- ✓ Visit of the markets of Kigali
- ✓ Kigali Cultural Village
- ✓ Art centers and galleries
- ✓ [Coffee farm trip tours in the surroundings of Kigali City](#)
- ✓ [Biking ride and swimming in the surroundings of Kigali City](#)
- ✓ Other places of interest

Attractive Safaris: Our professional driver guides will take you there for an in-depth view of Kigali city.